

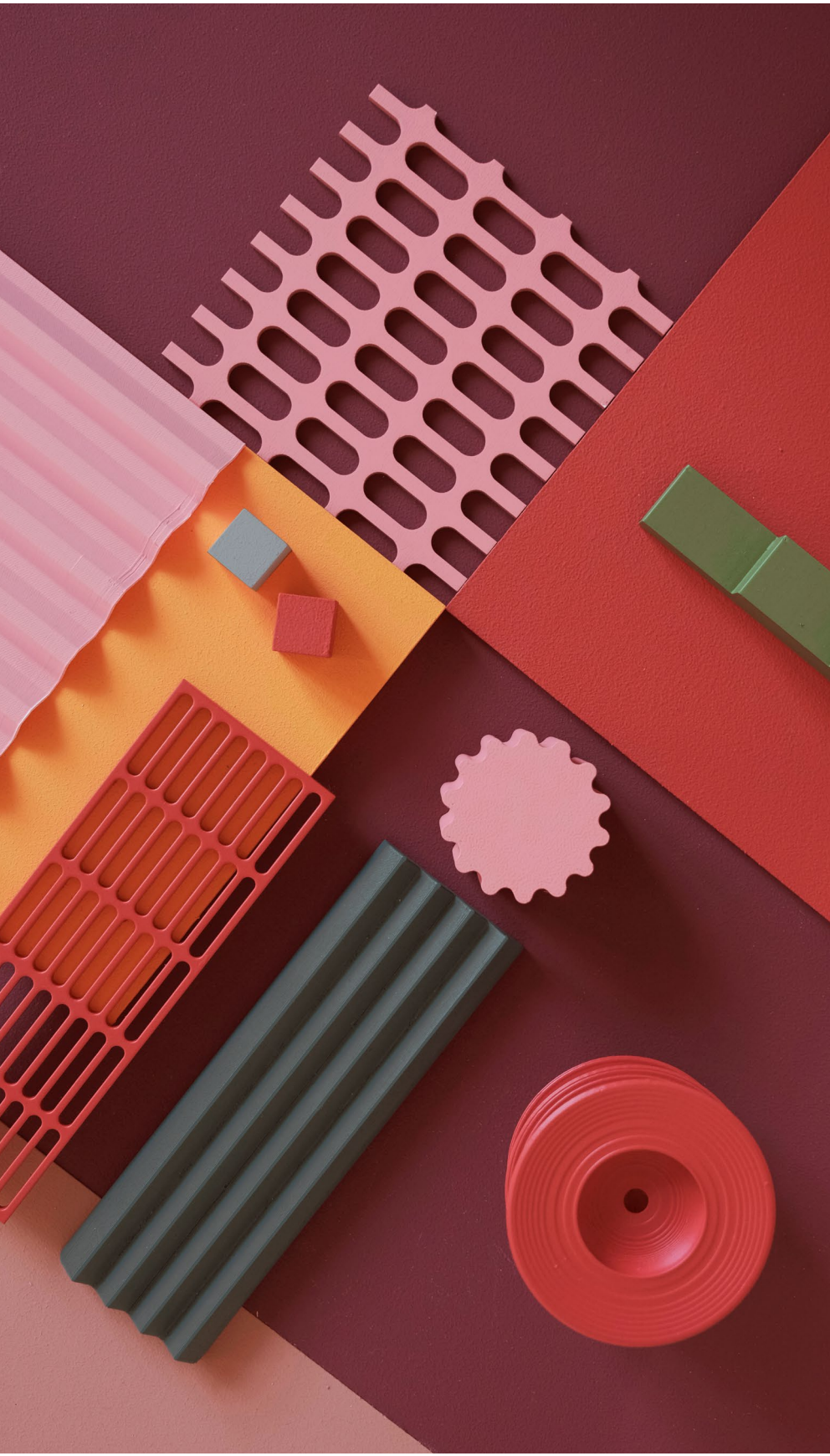
RAL COLOUR FEELING 2027+

PROACTIVE
READABLE
EMPATHETIC
EFFECTIVE
FORWARD

ENVISION +
CRAFT











ENVISION + CRAFT



Subscribe to the RAL
newsletter for updates!

ISBN 978-3-949161-17-9

2027+

RAL
COLOURS

PROACTIVE



FORWARD

ENVISION + CRAFT

„Envision“ describes our ability to develop future visions that serve as a compass for today's design decisions. „Craft“ signifies the meticulous materialisation of this vision through considered design refinement—encompassing persistent shaping, refining and adjustment until the concept attains its desired form.

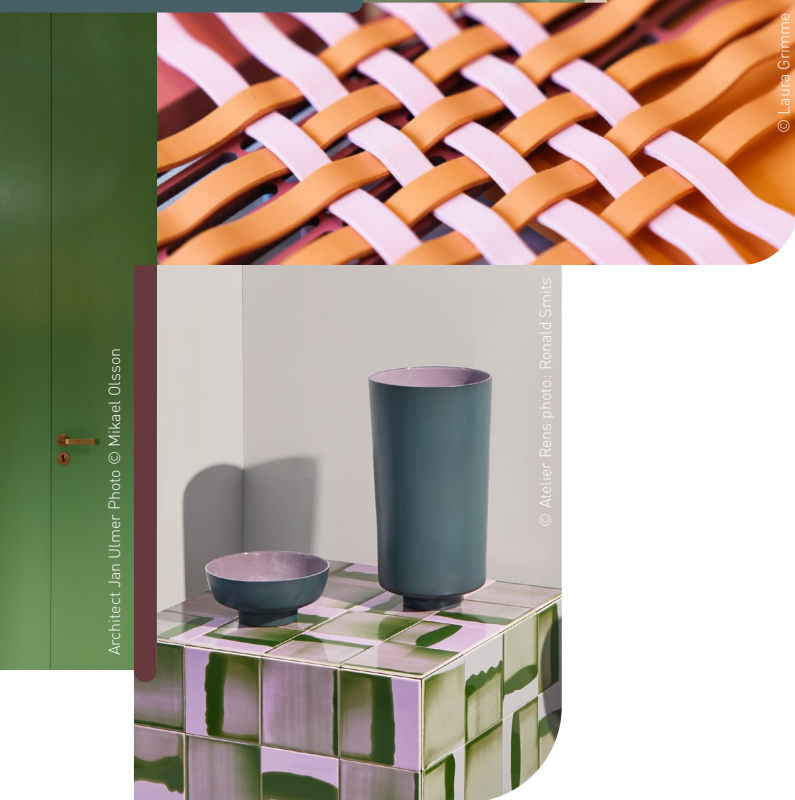
We are currently experiencing a period of transformation, with new design territories emerging whilst simultaneously witnessing a resurgence of importance placed on security, regionality and cultural rootedness. These apparent contradictions present not a conflict, but rather an opportunity for a new synthesis—one that honours enduring and future human values whilst preserving self-determined creative possibilities.

READABLE

EMPATHETIC



EFFECTIVE



Architect Jan Ulmer Photo © Mikael Olsson

© Atelier Rens photo: Ronald Smits

© Laura Grimme

The colours may differ from the original RAL sample due to printing.



* CONSCIOUSLY CON

	RAL 010 30 20 * Pinkish brown
	RAL 020 80 20 Marzipan pink
	RAL 030 40 40 Spicy red
	RAL 030 60 30 Antique pink
	RAL 040 60 20 Sienna yellow
	RAL 050 80 10 Pale sienna
	RAL 060 70 50 Topaz yellow
	RAL 090 85 05 * Pepper white
	RAL 100 60 10 * Olivine grey
	RAL 110 70 30 Wasabi green
	RAL 120 90 20 Kiwi sorbet green
	RAL 130 50 20 Spanish green
	RAL 180 80 10 * Light teal
	RAL 220 40 10 Corundum blue
	RAL 360 70 15 * Opaline pink

The colour palette of RAL COLOUR FEELING 2027+ embodies both permanence and transition. It envisions a world that acts proactively, communicates with legibility and comprehension, responds empathetically and designs with both effectiveness and foresight.

Accent tones such as Marzipan Pink, Topaz Yellow, Kiwi Sorbet Green and Spicy Red create a contemporary and dynamic impression, rooted in the high-contrast and atmospheric sensibilities of current spatial and product concepts. Pale Sienna, along with the consistently selected colours Pepper White and Light Teal, symbolises endurance, material authenticity, gentleness and lightness. The palette gains substance through confident, empathetically activating foundation tones such as Pinkish Brown, Corundum Blue, Spanish Green and Olivine Grey. These are frequently used as large-scale wall or ceiling colours. One of the most compelling aspects of this palette is its inherent capacity for creating meaningful contrasts.

The colour palette has been carefully curated to reflect the concept of continuity. Five colours from the previous year continue in the 2027+ palette, whilst ten additional colours refresh and expand the selection. This approach conserves resources, simplifies combinability and promotes longevity in design applications.

RAL COLOUR FEELING 2027+ serves as a highly effective tool for the colour design of products, collections and spaces. The palette, curated by our international team using empirical methods, enables design departments and architects to make well-founded colour decisions with confidence. In many instances, a single accent tone suffices to transform and expand existing concepts.

Follow RAL COLOURS's social media channels for continued inspiration and practical application guidance.

Access the complete RAL COLOUR FEELING 2027+ toolkit, professional resources and images at www.ral-farben.de/en/colour-feeling.



FUNCTIONAL, READABLE



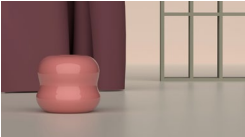
FOCUS



SOULFUL, TACTILE



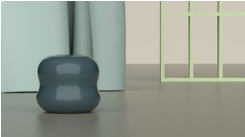
FEEL



CALM, BALANCING



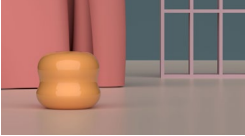
RELAX



WELCOMING, INCLUSIVE



COMMUNICATE



LIVELY, EXPERIMENTAL



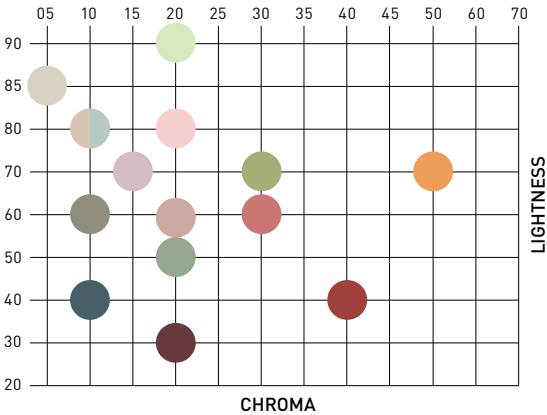
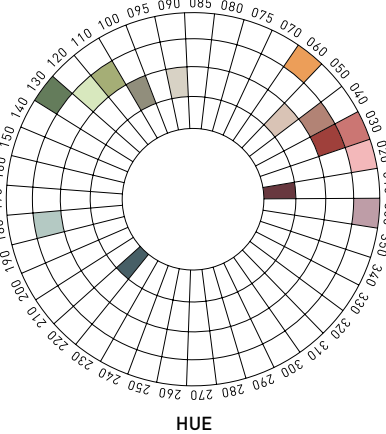
PLAY



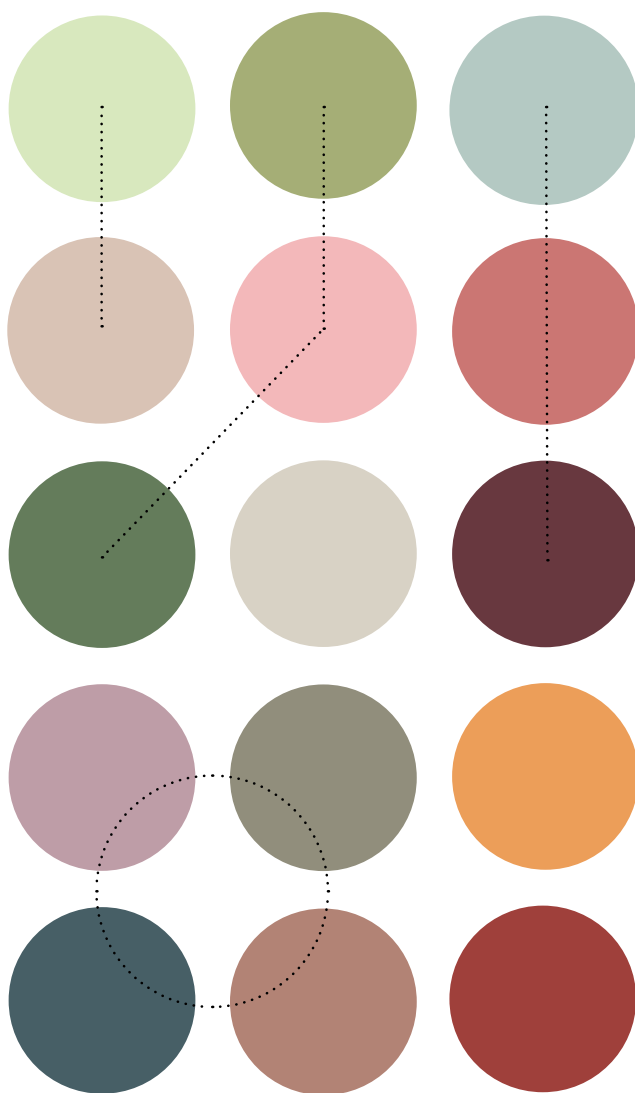
CREATING ATMOSPHERES

Our research reveals five fundamental design directions based on the most prevalent contemporary colour combinations. These inspiring colour profiles facilitate user-centred decisions for creating diverse and engaging work and living environments. Colours enhance wellbeing across different user groups, aid wayfinding and spatial organisation, while supporting both functional performance and emotional resonance of products.

COLOUR SYSTEMATICS



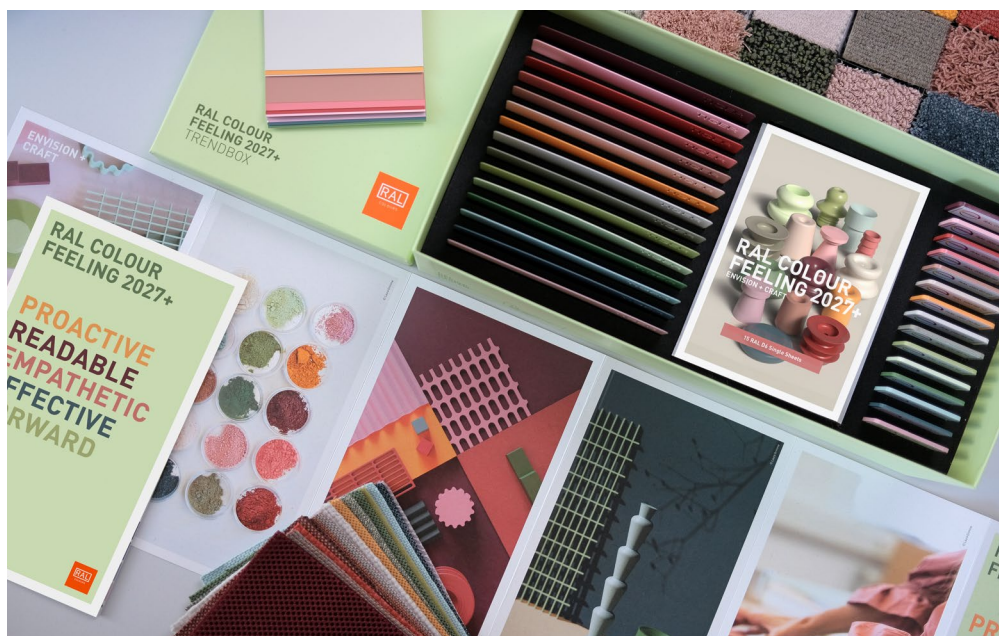
COLOUR MATRIX



RAL TREND 2027+

Every shade within the matrix combines seamlessly with all others. The colours are curated and arranged to generate endless compelling combinations – from dynamic contrasts to subtle tonal progressions. These versatile relationships enable design

solutions precisely calibrated to specific contexts, brand identities or audience segments. Products gain distinction and differentiation, while spatial sequences can be fine-tuned both visually and atmospherically.



All images unless indicated: © Timo Rieke

COLOUR MATERIAL FINISH

The RAL TRENDBOX is the hands-on companion to the trend report. All 15 shades are realised in RAL D6 single sheets, powder coated metal samples, plastic samples and translated to flooring samples and textile samples allowing colour concepts to be developed and executed consistently across material boundaries.

All colours are selected from the RAL DESIGN SYSTEM plus. The colour system allows for easy expansion of the 2027+ selection and adaptation for specific projects and products. With 1,825 standardised shades, the system ensures colour communication worldwide.

We extend special gratitude to the RAL Trendbox 2027+ collaboration partners: Covestro, Gabriel Fabrics, Object Carpet, Tiger Coatings and the German Design Council.

IMPRINT

RAL gemeinnützige GmbH
Fränkische Straße 7
53229 Bonn, Germany
Telephone: +49 228 68895 120
E-mail: colourfeeling@ral.de

Project team: RAL COLOURS and IIT Institute
International Trendscouting at HAWK Hildesheim;
Markus Frentrop, Meike Kettenuß, Laura Kilian (RAL) and
Beate Breitenstein, Sabine Hirsch, Melissa Lindemeyer,
Louisa Richter, Timo Rieke, Alina Schartner, Markus
Schlegel and Lina Schmidt (IIT)

WWW.RAL-FARBEN.DE/EN/COLOUR-FEELING

f [FACEBOOK.COM/RALCOLOURS](https://www.facebook.com/RALCOLOURS)
ig [INSTAGRAM.COM/RALCOLOURS_OFFICIAL](https://www.instagram.com/RALCOLOURS_OFFICIAL)
in [LINKEDIN.COM/COMPANY/RAL-COLOURS](https://www.linkedin.com/company/RAL-COLOURS)
p [PINTEREST.DE/RALCOLOURS](https://www.pinterest.de/RALCOLOURS)



Member of  **Rat für Formgebung**
German Design Council



covestro

**OBJECT
CARPET**



Gabriel®

ISBN 978-3-949161-17-9
© 2025



www.blauer-engel.de/uz195

- ressourcenschonend und umweltfreundlich hergestellt
- emissionsarm gedruckt
- überwiegend aus Altpapier